

Organisations Category

Contractor in New Works

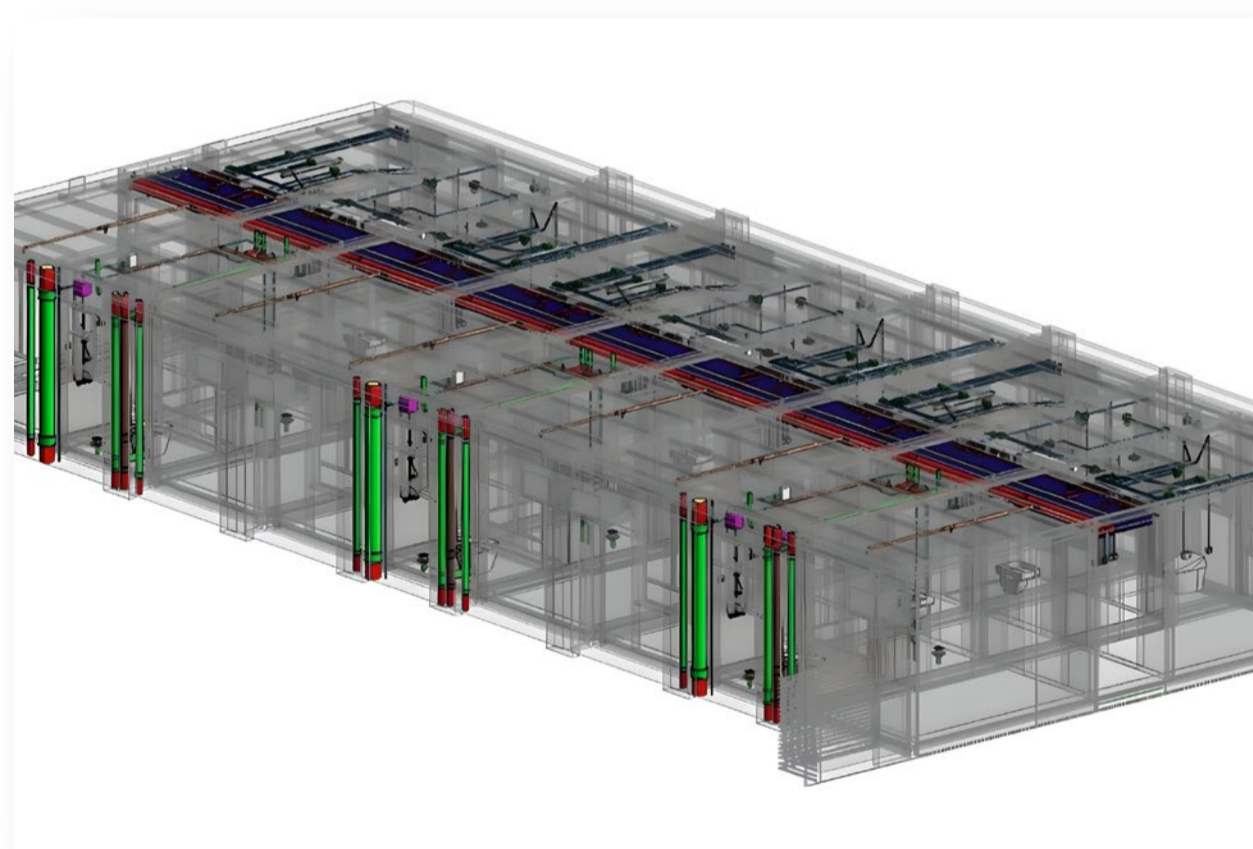
Bronze Award

Gammon Construction Limited



Main Contract Works for Student Hostel at Whitehead, Ma On Shan for City University of Hong Kong

The works involved in this project include: 3 nos. of 13 to 18 stories student residences towers with 2,168 nos. of hostel place for students and a combined 2-storey non-residential podium with common space, canteen, support facilities. We have applied 60% of the electrical and mechanical installation using DfMA. The project has a 2,250A temporary transformer room set up which save 1979 tons of carbon emissions. Slabs of typical floor corridors were prefabricated and attached to MIC modules which reduce in-situ works.



Sustainable Best Practice 1

For typical hostel floor, Gammon has designed the building services connections at the wall facing the corridor so that only one wall to work on instead of interfacing the two walls between MiC modules. This simplifies the workmanship both at mainland factory and on site. This not only increase the efficiency and quality of the construction processes, but also avoiding rework due to mistakes that generating waste on site. In addition, it reduces the connection materials required between the interfacing.

Sustainable Best Practice 2

The Project engaged CLP at foundation stage to have early electrification. Temporary transformer room is successfully built before superstructure construction started. The substation provided 2,250A of electricity and save 757,120 L of diesel and the associated noise from diesel generators, save 1,979 tCO₂e for superstructure construction period.



Sustainable Best Practice 3

The concrete slab of the typical floor corridor is prefabricated and attached to the MIC modules. In-situ works for formwork erection and concreting can be reduced hence potential waste are minimised. This simplifies the workmanship on site. This increases the efficiency and quality of the construction processes.