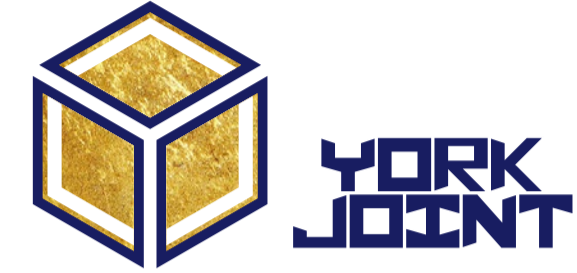


Organisations Category

Contractor in RMAA Works

Merit Award

York Joint Design & Construction Co. Ltd.



Jockey Club SolarCare Programme Phase 2 Batch 1.6 – Design, Construction and Operation of PV Systems

We build up a section for PwD working in a Barrier Free office under the with assistive tools like Screen Reader and Accessible accessories for BIM, monitoring of solar system, and more, working together to work on climate change and sustainability.

During the project, the ethnic minorities and ex-offenders will be stationed on site and PwD will help to prepare BIM for assets management and educational purposes, to monitor the performance of system, and notify the site team for maintenance.



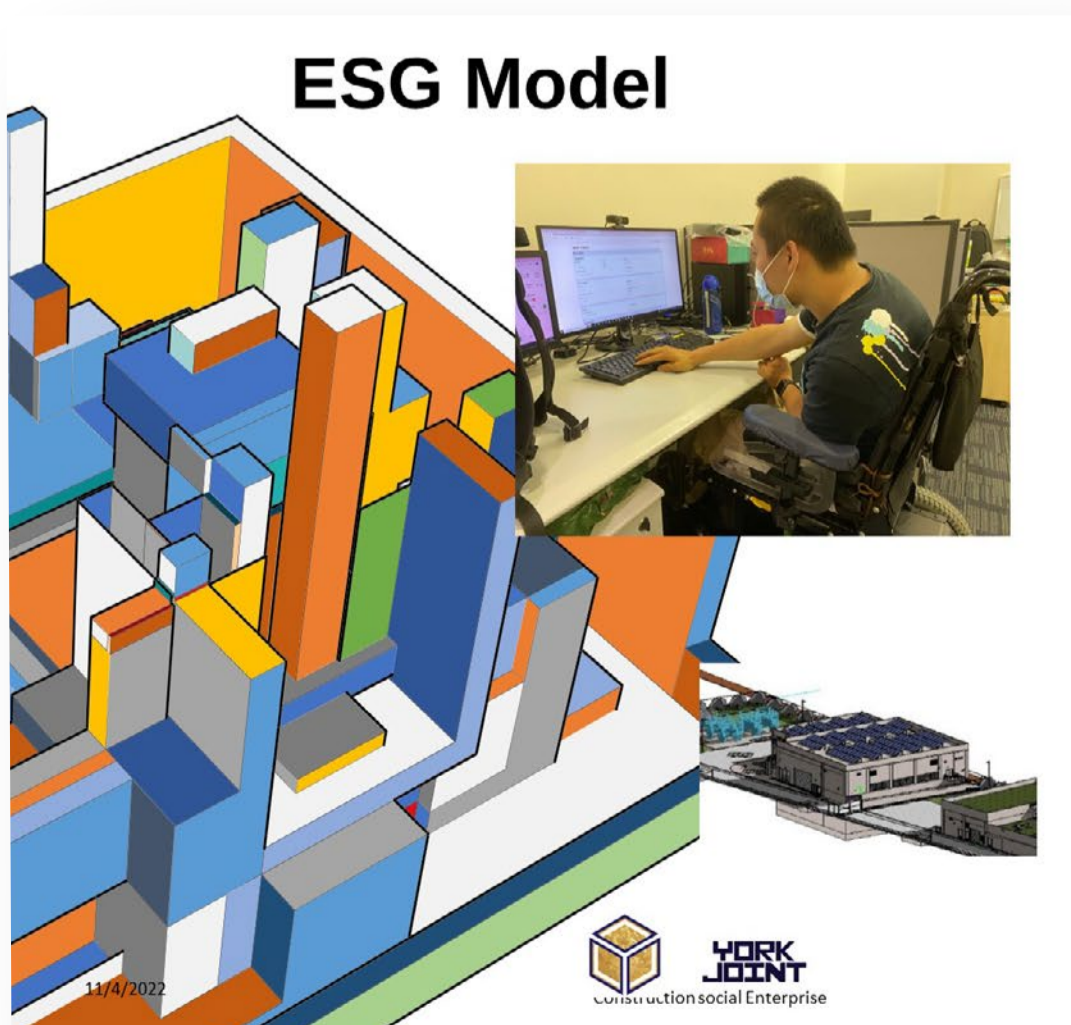
Sustainable Best Practice 1

We collaborate with CarbonCare InnoLab which envisages mitigating climate change while supporting charitable work. It brings together green groups, NGOs, renewable energy experts, electricity companies, government departments and the public at large to accelerate the shift in the energy mix to renewable energy - ultimately building a zero-carbon Hong Kong.

We work with local NGOs to push forward solar energy applications in the city and to benefit them by delivering professional on-grid solar energy system construction services.

Sustainable Best Practice 2

AI x IoT-based adjustable solar renewable energy management system that allows for easy management, data collection, and analysis, for self-adjusting PV System. IoT provide active notification for the issue on site and notify maintenance team to uphold the optimise performance. Building Information Modelling (BIM) with Geographic Information System (GIS) can be integrated to allow virtual testing and adjustment of solar panel configurations, as well as conducting engineering analysis for performance and optimisation.



Sustainable Best Practice 3

The ethnic minorities and ex-offenders will be stationed on site and PwD will help to prepare BIM for assets management and educational purposes, to monitor the performance of system, and notify the site team for maintenance.

The inclusive team utilises their talents to save the environment under climate change, using innovative technology for Construction 2.0. This ESG model enables us to apply our engineering skills to create a win-win-win model for the Earth, for NGOs, for the youths.