

# Organisations Category Developer (Private Sector)

## Silver Award

**Wheelock Properties (HK) Ltd &  
MTR Corporation Ltd**

**WHEELOCK**  
PROPERTIES  
會德豐地產



### Site D of the Remaining Portion of Tseung Kwan O, Town Lot No.70

WPL and MTRCL have engaged Gammon for the construction of a prime residential development – LOHAS Park Package 12. LP12 is part of WPL's O'EAST Portfolio included MALIBU, MONTARA, MARINI and LP12 in LOHAS Park and has attained BEAM Plus New Buildings 1.2 version - provisional GOLD. The concept of Health and Wellness encompasses the holistic vision for whole LOHAS Park which is in line with WPL's "The Spirit of Living" vision which is delivered to residents and general population.



### Sustainable Best Practice 1



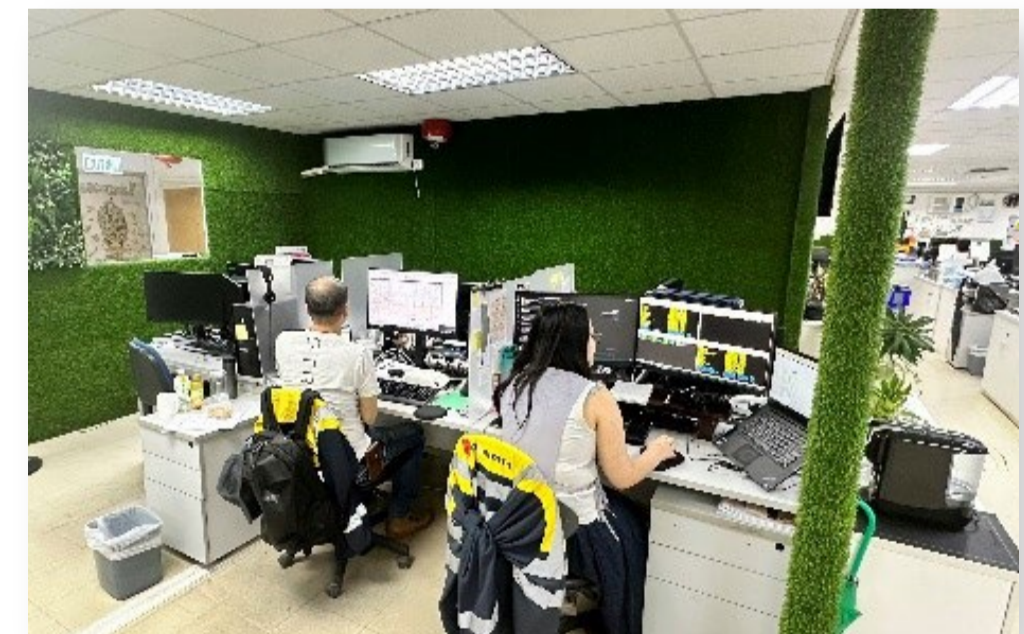
#### "Application of electrical construction equipment and machinery"

Electrical equipment plays a crucial role in promoting sustainable construction. By utilising energy-efficient equipment, such as electrical forklift and electrical vehicle for daily transportation, energy consumption as well as carbon footprint can be significantly reduced. In addition, AMPD Enertainer, has enhanced sustainability and enabled the implementation of advanced building automation systems, while optimising resource usage and promoting efficient operation. Through these measures, electrical equipment contributes greatly to creating environmentally friendly and sustainable practices.

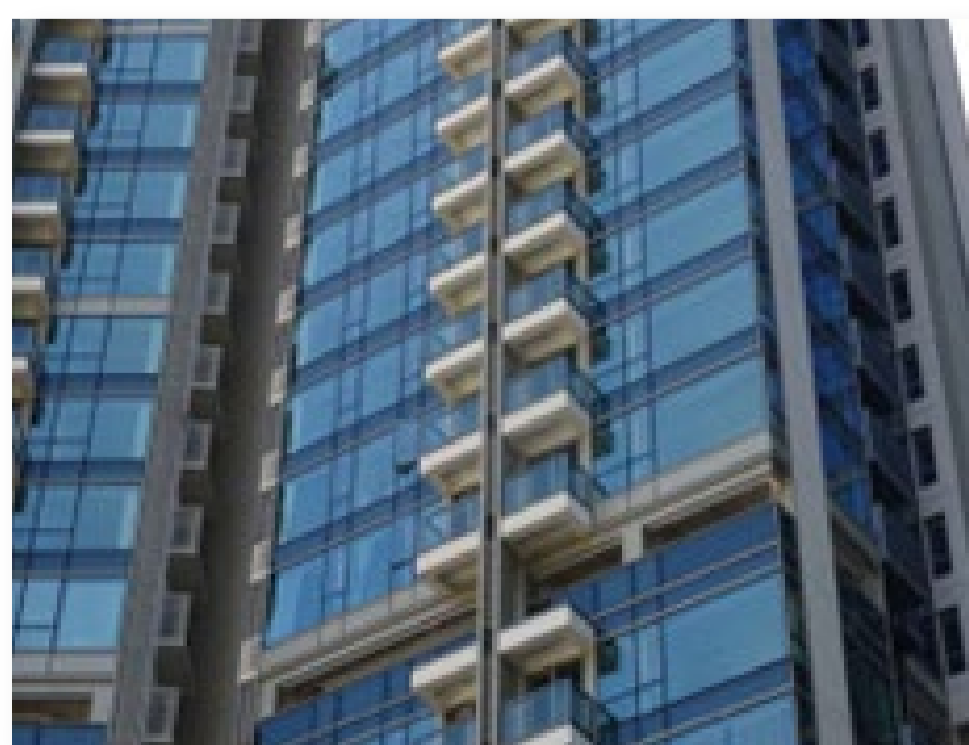
### Sustainable Best Practice 2

#### "Full BIM application from design to construction stage"

To better estimate the quantity of building materials and minimise construction clashes on site, BIM is fully adopted since design stage. The application of BIM helps to minimise abortive works incurred if compared to traditional method. Also, it significantly reduced paper usage by simplifying to provide the comment at online platform.



### Sustainable Best Practice 3



#### "High window-to-wall ratio design"

To incorporate high window-to-wall ratio with insulated low-e coating curtain wall could offer remarkable benefits for energy efficiency. We are emphasising that good air ventilation and adequate solar access are essential for each dwelling and surroundings. These sustainable practices helps to channel sea breeze, optimise solar access and harvest natural lighting. The curtain wall design is adopted at all O'East project which align with our company vision to create a sustainability society at LOHAS Park.