

# Industry Practitioners Category

## General Practitioner

### Outstanding Award

**WONG Sing-yam**



### Contract No.: SS K504 – Design and Construction of District Open Space, Sports Centre cum Public Vehicle Park at Sze Mei Street, San Po Kong

The proposed Open Space, Sports Centre cum Public Vehicles Park, contains an outdoor 7-a-side hard-surfaced soccer pitch, an outdoor basketball court and ancillary facilities and a 4-storey Sports Centre of superstructure works.

Summary of sustainable construction achievements:

- Procurement of green product
- Apply of Sunny Deck
- Silent Up retractable noise barrier

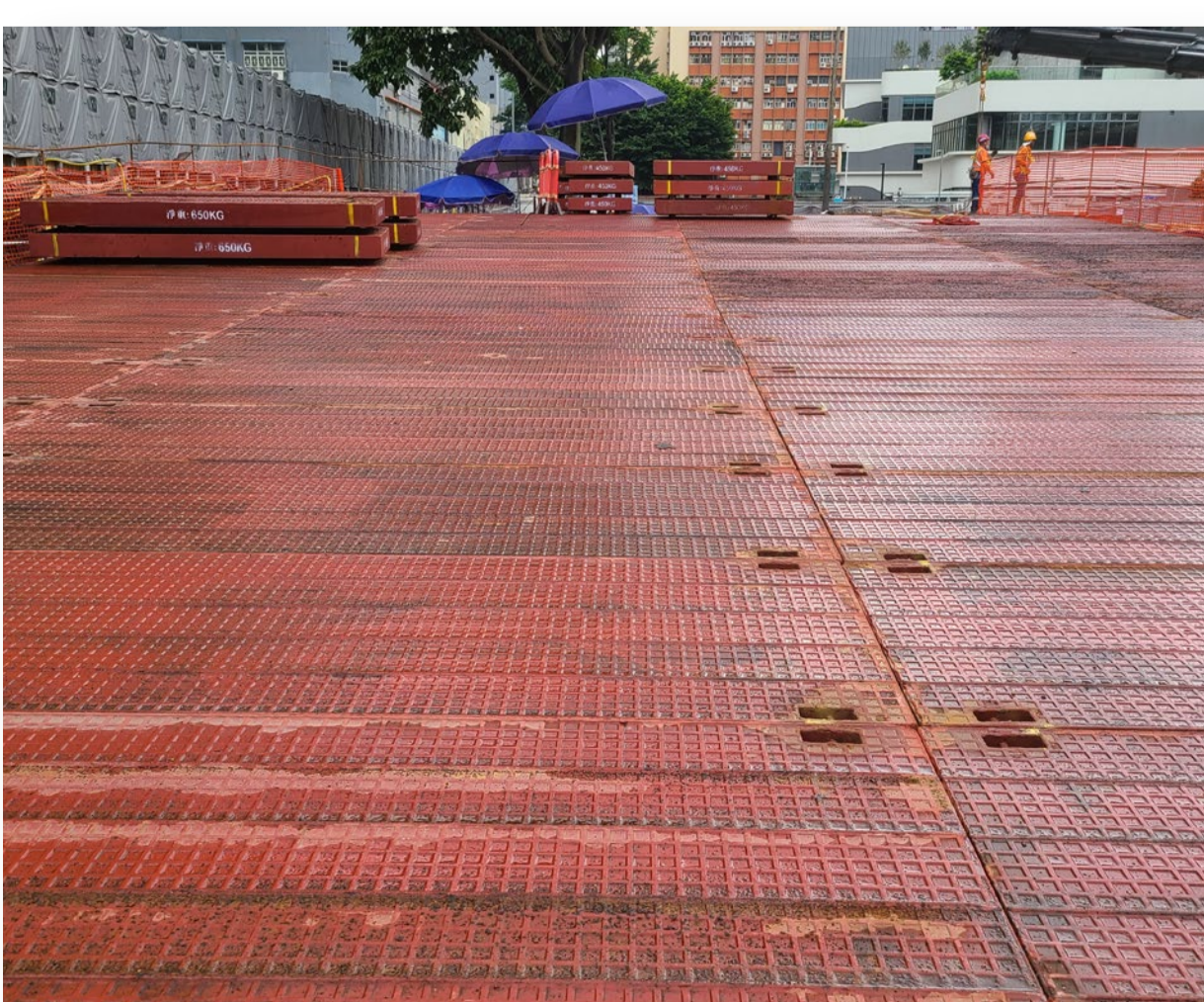


#### Sustainable Best Practice 1

Silent Up Retractable Noise Barrier - is a CITF preapproved product, the standalone retractable noise barrier is about 4.4 m high which employs an automatic wind load relieving mechanism that reduces structure loading requirement significantly. The barrier dampens the sound wave produced by the machinery on site (maximum of 27dB(A) noise reduction), thereby lessening neighbouring noise disturbance. To prevent causing annoyance to the noise-sensitive receiver (residential building), the barrier is erected at the site's southern boundary.

#### Sustainable Best Practice 2

Green certificated products are adopted throughout the construction cycle including GGBS concrete, eco-brick, gypsum block, steel with recycle content and FSC/PEFC timber. There were about 2,273 tons of steel with recycled content consumption, approximately 4,480 tCO<sub>2</sub>e reduction. These green construction materials are designed to have a reduced impact on the environment throughout their life cycle, from manufacturing to disposal or recycling. Utilizing of these green products for achieving the purpose of resources conservation, waste minimisation, energy reduction, and sustainable practices promotion.



#### Sustainable Best Practice 3

Sunny Deck is a temporary platform designed to give workers a solid working area at high altitudes. It is constructed of steel and intended to sustain personnel, tools, and materials during the ELS stage. Because the sunny deck is modular and changeable, it may be rearranged to meet the shifting requirements of our project, increasing flexibility and adaptability. Additionally, the deck can be recycled or used again, lowering its carbon footprint. Also, the sunny deck acts as a sound-absorbing platform, which reduces complaints from the neighbourhood.