

# Industry Practitioners Category

## Young Practitioner

### Outstanding Award

**Winnie LI Wing-yin**



## In-situ Reprovisioning of Sha Tin Water Treatment Works (South Works) – Water Treatment Works and Ancillary Facilities

The South Works of Sha Tin Water Treatment Works commissioned in 1964 is now undergoing the substantial in-situ reprovisioning works for replacing the aged facilities and uprating the treatment capacity. Sustainable resources and innovative technologies including the renewable energy generation, digitalisation, and AI safety monitoring system have been applied widely in the project. The innovative construction greatly mitigate possible environmental nuisance, streamline workflows, improve resource efficiency, and also demonstrates our commitment to the environmental responsibility.



### Sustainable Best Practice 1

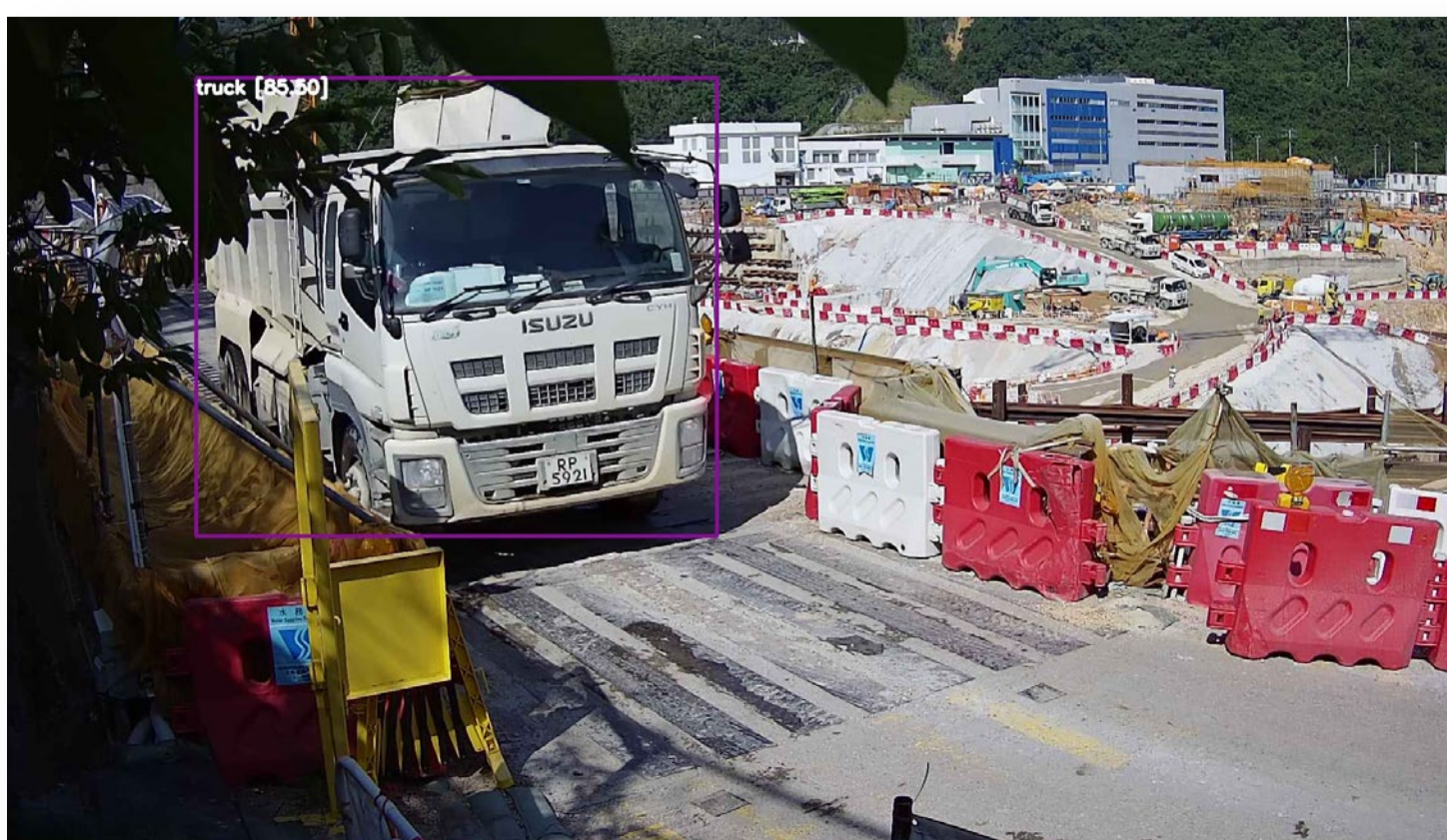
#### Renewable Energy Generation

- Install solar power monitoring systems to track energy generation and consumption on site.
- Conduct regular inspections of environmental devices, including solar panels, to ensure devices in good condition and functioning optimally.
- Collaborate with suppliers to promote the use of renewable energy sources, such as solar power, throughout the project.

### Sustainable Best Practice 2

#### Digitalisation

- Utilise digital communication platforms to capture and record photo evidence of environmental conditions and noncompliance issues
- Issue non-compliance notifications and reports in digital formats to streamline communication and reduce paper usage.
- Actively participate in training sessions and toolbox talks to promote the use of electronic and paper-free training notes, enhancing sustainability practices.



### Sustainable Best Practice 3

#### AI Environmental Monitoring System

- Regularly monitor real-time data from the AI environmental monitoring system to identify any deviations from set parameters.
- Take immediate action when readings exceed established thresholds, such as conducting onsite investigations and implementing corrective measures.
- Collaborate with site workers to enhance awareness and ensure compliance with environmental monitoring procedures and protocols.